

Wheels



Jim Miller's class from Central Springs High School in Manly, IA. Working on a number of Creative Industries' Wheels and a few Shimpo Wheels.

Pottery Wheels

Brent Wheels

Minnesota Clay has been an authorized dealer of Brent Wheels for more than 20 years. EX, CXC, C, B, and ie-x wheels are all reversible and have state-of-the-art control boxes with quick-connect plugs on the foot pedal and motor for easy removal if service is needed. All wheels include "How to Throw on a Potter's Wheel" DVD. Brent wheels are high quality, heavy duty, and are guaranteed for ten years. Inbound and outbound charges may apply. FOB Indianapolis, IN 46254

brent[®] model ie potter's wheel



- 1/4 hp, 6 amp motor
- Handles 75 lbs. of clay
- 12" wheel head with removable bat pins
- Adjusts/Converts to tabletop
- All steel construction
- Free Splash Pan
- Free 12" Plasti-Bat
- Opt. Reverse Switch for \$70
- Ten Year Warranty

RBIE 93 lbs. **\$895**

brent[®] model ie-x potter's wheel



- 1/3 hp, 6 amp motor
- Handles 100 lbs. of clay
- 14" wheel head with removable bat pins
- Adjusts/Converts to tabletop
- All steel construction
- Free Splash Pan
- Free 14" Plasti-Bat
- Ten Year Warranty
- Reversing switch

RBIE X 98 lbs. **\$995**

brent[®] model b potter's wheel



- 1/2 hp, 5 amp motor
- Handles 150 lbs. of clay
- 12" wheel head with removable bat pins
- SCR classic control
- Reversible
- Free Splash Pan
- Free 12" Plasti-Bat
- All steel construction including tabletop
- Ten Year Warranty

RBB 112 lbs. **\$1349**

\$70 Gift of Amaco Glaze

brent[®] model c potter's wheel



- 3/4 hp, 7 amp motor
- Handles 225 lbs. of clay
- 14" wheel head with removable bat pins
- SCR classic control
- Reversible
- Free Splash Pan
- Free 14" Plasti-Bat
- All steel construction including tabletop
- Ten Year Warranty

RBC 117 lbs. **\$1450**

\$70 Gift of Amaco Glaze

brent[®] model cxc potter's wheel



- 1 hp, 10 amp motor
- Handles 300 lbs. of clay
- 14" wheel head with removable bat pins
- SCR classic control
- Reversible
- Free Splash Pan
- Free 14" Plasti-Bat
- All steel construction including tabletop
- Ten Year Warranty

RBCXC 117 lbs. **\$1550**

\$70 Gift of Amaco Glaze

brent[®] model EX potter's wheel



- 1^{1/2} hp, 15 amp motor
- Handles over 450 lbs. of clay
- 14" wheel head with removable bat pins
- SCR classic control
- Reversible
- Free Splash Pan
- Free 14" Plasti-Bat
- All steel construction including tabletop
- Ten Year Warranty

RBEX 119 lbs. **\$1695**

\$70 Gift of Amaco Glaze



Pottery Wheels

Wheels

brent[®] 16 potter's wheel



- 1/2 hp, 5 amp motor
- Stationary during throwing
- 12" wheel head with removable bat pins
- New PWM control
- Reversible
- Free Splash Pan
- Free 12" Plasti-Bat
- Adjustable 19^{1/2"}-34"
- Ten Year Warranty



RBMOD16 287 lbs. \$2795

\$70 Gift of Amaco Glaze

brent[®] J and EJ potter's wheels



- Adjustable Seat
- Concrete flywheel 30" dia. 135 lbs.
- 14" wheel head with removable bat pins
- 1" steel shaft connects flywheel to wheelhead
- Free Splash Pan
- Free 14" BioBat™
- Ten Year Warranty

EJ shown above with 1/4 hp, 5 amp motor

RBJ 295 lbs. \$1595

RBEJ 333 lbs. \$2595

\$70 Gift of Amaco Glaze

Brent Wheel Accessories



Brent Splashpan
High density polypropylene molded pan fits all Brent wheels and is designed to catch excess water. It snaps under the top bearing housing, with no bolts, pins or screws to get lost. Easily removed for cleaning. Ship wt. 4 lbs.

RBSPLASH Splashpan \$49.95



Brent Stool
Heavy gauge tubular steel with enamel finish. It can be used with Models B, C, CXC, EX, ie, ie-x, and Model 16. 17^{1/2"} x 16^{1/2"} x 21^{3/4"}H. Ship wt. 11 lbs.

RBSTOOL Stool \$68.00



Brent Leg Extension Kit
Raise your wheel to standing height to reduce stress on your back. This leg extension kit fits wheels B, C, CXC, EX, ie or ie-x and adjusts the head height from 31^{1/2"}- 42" high. Ship wt. 56 lbs.

RBLEGK Leg Ext. Kit \$229.00



Brent Seat
Attached directly to models B, C, CXC, EX, ie or ie-x and is adjustable both for height and distance from wheel head. Sturdy enough for extensive school use, and always stays with the wheel so it can't be misplaced. Ship wt. 22 lbs.

RBSEAT Seat \$279.00



Brent Curved Workstation
The table stores clay, tools, brushes, and other supplies within arm's reach while throwing. The table is made from rigid 1/3" plastic that is non-absorbent and easy to clean. The workstation has a one-piece curved table that measures 35^{1/4"} wide, 18^{3/16"} deep. Two cup holders - 2^{3/16"} and 4^{3/16"} in diameter. It also includes two sets of steel supports and adjustment/tightening knobs.

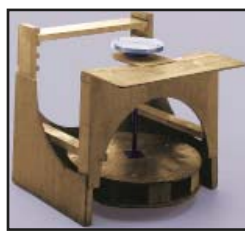
RBCURVE Curved Workstation \$249.00



Brent Worktables
The tables stores clay, tools, brushes, and other supplies within arm's reach while throwing. The table is made from rigid 1/3" plastic that is non-absorbent and easy to clean. The worktables are either 16" x 10" table or 18" x 10" table with cup holder. Each includes one pair of steel supports and adjustment/tightening knobs. They are sold separately or as a set. They can be placed in multiple positions for maximum convenience.

RBWT16	16" X 10" Table	\$130.00
RBWT18	18" X 10" Table	\$130.00
RBWT	Both Tables	\$249.00

Kick Wheel Wood Kit



The wood kit contains all the wood pieces, pre-cut and ready for assembly. The frame uses a 1/2" exterior plywood stress skin, which is as rigid as most steel designs. To complete the wheel, all you need is a drill, hammer, nails, glue, and bricks.

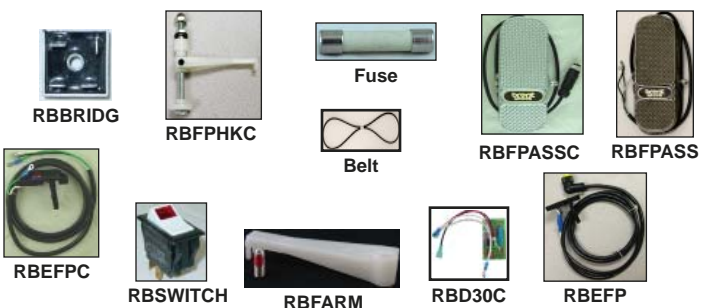
RBKWWK Wood Kit 90 lbs. \$265.00

RBKWK14 Metal Parts w/14" wheel head 19 lbs. \$310.00

RBWSPK Splashpan Mount 3 lbs. \$13.95

Brent Wheel Parts

RBFBH	Fuse Holder All Models	\$5.95
RBFBUSE15	Model 15 Fuse	\$4.95
RBFBUSEC	Model C, CXC Fuse	\$4.95
RBFBRIDG	Bridge Rectifier	\$16.95
RBFBWITCH	4 Prong Switch Carl-G Drip Proof	\$14.95
RBFBARM	Foot Pedal Arm	\$4.95
RBFB30C	Control Board, 110V for Model CXC	\$130.00
RBFBPASSC	Foot Pedal Complete	\$165.00
RBFBPASS	Foot Pedal w/o plug	\$165.00
RBFBELT15	Model 15 Belt	\$39.95
RBFBELTA	Model A Belt	\$15.95
RBFBELTBC	Model B, C, CXC Belt	\$15.95
RBFBUSEAB	Model A, B, ie	\$4.95
RBFBATP	Bat Pins Kit	\$8.95
RBFBFPC	Electric Foot Pedal Assembly w/o plug	\$85.00
RBFBFP	Electric Foot Pedal Assembly with plug	\$85.00
RBFBPHK	Foot Pedal Hardware Kit w/o arm	\$19.95
RBFBPHKC	Foot Pedal Hardware Kit with arm	\$21.95

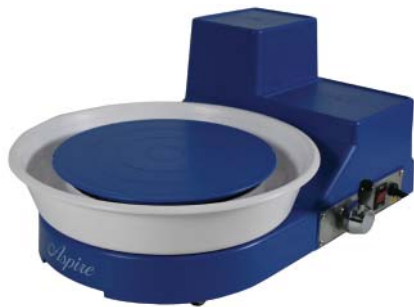


Pottery Wheels

Shimpo Wheels

Shimpo Ceramics, a division of Nidec-Shimpo America Corporation, manufactures and distributes pottery wheels worldwide to the satisfaction of artists, teachers, students and businesses of all cultures. For nearly half a century they have been committed to continuing global traditions in making ceramic products for use in the home, in architecture and as art. **Inbound and outbound charges may apply. FOB Itasca, IL 60143**

Aspire *New!*



- 1/3 hp motor
- Handles 20 lbs. of clay
- 7" alloy wheel head with bat pins
- Two Free Bats
- Wheel is only 25 lbs.
- One-piece splash pan
- 20"L x 14 1/2"W x 9"H
- Two Year Warranty

SHASPIRE 30 lbs. **\$435**

VL-Lite *New!*



- 1/2 hp motor
- Handles 25 lbs. of clay
- 12" alloy wheel head with bat pins
- Reversible
- Wheel only weighs 51 lbs.
- Two-part splash pan
- Belt driven
- 22"L x 28"W x 21"H
- Two Year Warranty

SHVLLITE 84 lbs. **\$665**

RK-Whisper



- 1/2 hp motor
- Handles 100 lbs. of clay
- 12" cast aluminum wheel head
- Silent wheel
- Reversible
- Two-part splash pan
- Brushless DC motor and direct drive (no belt) system
- Two Year Warranty

SHRKWHIS 135 lbs. **\$1095**

VL-Whisper



- 1/2 hp motor
- Handles 100 lbs. of clay
- 14" cast aluminum wheel head
- Silent wheel
- Reversible
- Two-part splash pan
- Brushless DC motor and direct drive (no belt) system
- Two Year Warranty

SHVLWHIS 135 lbs. **\$1195**

Shimpo Parts & Accessories



RK-Whisper Small Work Table

Dimensions: 16" x 21 1/2" Plastic worktables. Also works with RK-10 Basic and Super, older RK-2 models.

SHSWT Small Work Table **\$50.00**



RK-Whisper Large Work Table

Dimensions: 15" x 44" Plastic worktables. Also works with RK-10 Basic and Super, older RK-2 models.

SHLWT Large Work Table **\$99.00**



Adjustable Leg Stool

A choice of heights from 19" to 26", in 1" increments. Cushion seat.

SHSTOOL Adjustable Stool **\$59.95**



SHCLIPS Small Splash Pan Clips **\$4.25**

SHCLIPL Large Splash Pan Clips **\$3.65**

SHBATPO Old Bat Pin (Individual) **\$3.00**

SHBATPN New Bat Pin (Individual) **\$3.00**



One-Piece Small Splash Pan

Convenient drain plugs. One-piece fits all Master Series (with 12" wheel head), RK-10 and some older RK-2 models.

SHPANS1 Small One-Piece **\$36.00**



One-Piece Large Splash Pan

Fits all Master Series except M-1.

SHPANL1 Large One-Piece **\$39.25**



Two-Piece with Clips

Fits RK-Whisper and RK-10 models manufacture after 1981 and all Master Series wheel with 12" wheel head.

SHPANC2 Two-Piece with Clips **\$82.50**



Two-Piece Interlocking

Features a snug fit and interlocking design. Fits all Master, RK-10, Velocity, and Whisper Series wheels.

SHPAN2 Two-Piece Interlocking **\$38.50**



Pottery Wheels

Skutt Wheels: Thomas Stuart Series

Skutt Wheels: Thomas Stuart Series are the ultimate wheels for professional potters and schools. The POWER, DESIGN, & DURABILITY of our electric wheels is unmatched by any other wheel on the market today. **Inbound and outbound charges may apply. FOB Portland, OR 97206**

Classic

1/3 hp, 100 lbs. of clay



TSC 105 lbs. **\$1175**

Elite

1/2 hp, 150 lbs. of clay



TSE 110 lbs. **\$1280**

Professional

1 hp, 400 lbs. of clay



TSP 125 lbs. **\$1450**

- Built-in splash pan
- 14" wheel head that easily removed
- Reversing Switch
- 6-groove belt for smooth, quiet and powerful performance
- Oversized legs for stable throwing
- Five Year Warranty

Legend

1/3 hp, 100 lbs. of clay



TSLEG 105 lbs. **\$1175**

Revolution

1/2 hp, 150 lbs. of clay



TSREV 110 lbs. **\$1280**

Premiere

1 hp, 400 lbs. of clay



TSPRE 125 lbs. **\$1450**

- One piece removable splash pan
- 14" wheel head that is easily removed
- Reversing Switch
- 6-groove belt for smooth, quiet and powerful performance
- Oversized legs for stable throwing
- Five Year Warranty

Prodigy



- 1/3 hp motor
- Handles 100 lbs. of clay
- 12" wheel head that is easily removed
- Welded steel frame
- SSX drive system upgrade
- Round one piece splash pan
- 6-groove belt for smooth, quiet and powerful performance
- Five Year Warranty

TSPROD 94 lbs. **\$849**

Steven Hill Special Edition



- 1/2 hp motor
- Handles more than 150 lbs. of clay
- 14" wheel head that easily removed
- Adjustable leg extensions
- Reversing Switch
- SSX drive system upgrade
- Built-in splash pan
- Wheel head shaft extension
- Five year Warranty

TSSH 110 lbs. **\$1560**

Thomas Stuart Parts & Accessories

TSLE	Adjustable Leg Extension	\$160.00
TSCH	Cup Head (12" ring mold)	\$120.00
TSEXT	Shaft Extension (built-pan only)	\$68.00



TSEXT



TSCH



TSLE



Pottery Wheels

Skutt Wheels: Thomas Stuart Series Kick Wheel



Kick Wheel shown with optional motor and splash guard

- 14" cast aluminum wheel head
- 140 lbs. flywheel, 2" thick
- Adjustable seat: forward, backward, up, and down
- Splash guard is optional
- Large tabletop
- Five Year Limited Warranty

Kick Wheel & Accessories

TSKWKD	Unassembled Kick Wheel	\$740
TSKW	Assembled Kick Wheel	\$790
TSMOTOR	Kick Wheel Motor 1/3 hp	\$340
TSPLASH	Splash Guard	\$75



Speedball Arts' Wheels

Started in 1899 Speedball has been a trusted name in art materials for over a century. Speedball has led the way in providing clay centering power for your dollar invested on all of its wheels. Inbound and outbound charges may apply. FOB Statesville, NC 28677

Artista



- 1/3 hp motor
- Handles 25 lbs. of clay
- Two-part splash pan included
- 11" aluminum wheelhead
- Stable tabletop model only 3⁵/₈" H
- Sturdy high impact plastic and steel frame
- 2 free plastic bats
- Two 2 quart buckets
- 2 Year Warranty

CIARTIST 35 lbs. **\$425**

Artista Accessories

CIARTLEG	Static Leg Set	\$79.95
CIFOLD	Folding Leg Set	\$189.95
CIARTFOOT	Optional Foot Pedal	\$89.95



Static Leg Set

Folding Leg Set



Creative Industries Splash Pan



Boss series Splash Pan. Two-part removable splash pan made for very easy cleanup and high liquid reservoir containment.

CISPLASH Splash Guard **\$59.95**

Clay Boss



- 1/2 hp motor
- Handles 100 lbs. of clay
- Two-part splash pan included
- 14" polyethylene wheel
- Polypropylene tabletop
- Sturdy steel structure
- Reversing plug
- 2 free plastic bats
- 5 Year Warranty

CIBOSS 66 lbs. **\$649**

Big Boss



- 1 hp motor
- Handles 150 lbs. of clay
- Two-part splash pan included
- 14" polyethylene wheel
- Polypropylene tabletop
- Sturdy steel structure
- Reversing plug
- 2 free plastic bats
- 5 Year Warranty

CIBBOSS 75 lbs. **\$749**

Boss Elite SQ



- 1 hp motor
- Handles 175 lbs. of clay
- Two-part splash pan included
- 14" polyethylene wheel
- Polypropylene tabletop
- Sturdy steel structure
- 1/2" thick raised polyurethane tabletop
- 2 free plastic bats
- 2 free plastic bats
- 5 Year Warranty

CIELITE 75 + 26 lbs. **\$889**



Pottery Wheels

Lockerbie Kick Wheel

Model K has been on the market since the mid 60's and can be found in schools, colleges, and institutions throughout the world. The solid construction of heavy-duty welded steel pipe, a large table area providing space for a water bucket, tools, bats, and clay makes this wheel a durable natural for the classroom or the professional potter. The splash pan is included with your initial purchase and a 5 year limited warranty. **FOB Cambridge, OH 43723**



- 14" wheel head
- 95 lbs. flywheel, 28" dia.
- Wooden Seat
- Overall size: 36" x 42" x 28"
- Large reinforced tabletop that holds up to 200 lbs.
- Welded steel pipe and angle iron.
- Motor (on EK Model) 1/3 hp 120V
- Splash Pan included
- 5 year limited warranty

Model EK, the motorized kick wheel with an optional reversing switch, is driven by a heavy-duty 1/3 hp motor with a rubber friction drive. When the drive is disengaged the wheel will operate as a manual kick wheel. To use the drive, simply depress the foot pedal to engage the rubber drive against the edge of the flywheel. Speed range is 0-157 RPM. The wheel is whisper quiet, controlled with a switch conveniently located at the edge of the work table and has enough power to center 50 lbs. of clay.

LKKICK	Kick Wheel	260 lbs.	\$815
LKEKICK	Elec. Kick Wheel	290 lbs.	\$1,065
LKMOTCA	Motor Kit	35 lbs.	\$346
LKSPLASH	Spash Pan	-	\$85
LKRDW	Rubber Drive Wheel	-	\$16

Pacifica Wheels

Since their inception in 1972, Pacifica Potter's Wheels have been considered by thousands of experienced potters and instructors to be the best wheel value on the market. No gimmicks, just solid, dependable construction and super reliable electronics make Pacifica the potter's choice. Total Satisfaction Guarantee. **Inbound and Outbound charges may apply. FOB Cambridge, OH 43723**

Glyde Torc GT400



- 1/2 hp motor
- Handles 80 lbs. of clay
- Easy to remove splash pan included
- 13" aluminum wheel head
- Quiet motor operation
- Smooth wheel head
- Reversing switch
- Magic Pedal: Magnetic
- 2 Year Warranty

PCGT400 108 lbs. **\$895**

Glyde Torc GT800



- 1 hp motor
- Handles over 100 lbs. of clay
- Easy to remove splash pan included
- 13" aluminum wheel head
- Quiet motor operation
- Smooth wheel head
- Reversing switch
- Magic Pedal: Magnetic
- 2 Year Warranty

PCGT800 113 lbs. **\$1015**

Soldner Wheels

Inbound and outbound charges may apply. FOB Ft. Collins, CO 80522

P Series



- Table top is a 3/4" marine plywood finished with polyurethane
- 14" wheel head
- Heavy duty V-belt/pulley drive
- Adjustable Legs
- Reversing switch
- 2 pin head system

SOP100	1/4 hp, 100 lbs. of clay	130 lbs.	\$1447
SOP200	1/2 hp, 200 lbs. of clay	140 lbs.	\$1591

S Series



- Table top is a 3/4" marineplywood finished with polyurethane
- 14" wheel head
- Permanent magnet motor
- Adjustable Legs
- Reversing switch
- 2 pin head system

SOS50	1/6 hp, 50 lbs. of clay	85 lbs.	\$1095
SOS100	1/4 hp, 100 lbs. of clay	95 lbs.	\$1206



Wheels Accessories

W
h
e
e
l
s

New!



Plasti-Bats®

New! 9" square Plasti-Bat (with pin holes) fits standard wheel heads with pre-drilled holes that are 10" apart.

Drilled Bats

Holes drilled 10" on center. The holes will not become over sized after use.

BTP9	9" Square Bat	2 lbs.	\$9.39
BTP12	12" Plasti-Bat	2 lbs.	\$13.95
BTP14	14" Plasti-Bat	2 lbs.	\$16.95
BTP16	16" Plasti-Bat	2 lbs.	\$27.95

Undrilled Bats

BTP8U	8" Plasti-Bat	1 lb.	\$8.49
BTP10U	10" Plasti-Bat	1 lb.	\$9.95
BTP12U	12" Plasti-Bat	2 lbs.	\$12.95
BTP14U	14" Plasti-Bat	2 lbs.	\$15.95
BTP16U	16" Plasti-Bat	2 lbs.	\$26.95



Speedball Arts' Bats

Injected molded plastic bats will fit most wheels.

CIBAT7	7 1/2" square bat	\$4.50
CIBAT12	12" dia. bat	\$6.50
CIBAT14	14" dia. bat	\$7.50



North Star Bats

Bats are drilled for bat pins 10" on center. 13" and 15" bats are made of duron and are 1/4" thick. 18" and 21" bats are made of medex and are 3/8" thick.

NS805	13" bat	\$5.50
NS815	15" bat	\$5.75
NS825	18" bat	\$13.00
NS835	21" bat	\$17.00



Pressboard Bat

The pressboard bat is 5/8" thick. The thickness of the bat makes it rigid so they will not flex and distort ceramic pieces.

RBBAT	14" Pressboard	\$14.95
--------------	----------------	----------------

Hydro-Bats

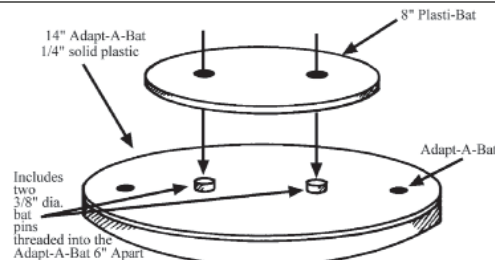
The Hydro-Bat is made of Hydro-Stone, a gypsum cement nearly ten times stronger than conventional pottery plaster. They Hydro-Bat eliminates the need for wiring off your work by absorbing moisture out of the bottom of your thrown form. Hard rubber grommets cast into the underneath side of the bat will not swell or change shape.



These bats are designed to fit snugly on the standard bat which is 3/8" wide. The 12.5" and 14" fit on wheel heads with pins spaced 10" apart.

HYDRO12	12.5" Hydro-Bat	\$15.99
HYDRO14	14" Hydro-Bat	\$17.99

Adapt-A-Bat



This system allows the use of 8" or 10" bats on larger wheel heads that have holes drilled at 6" on center.

BTADAPT	Adapt-A-Bat™	2 lbs.	\$33.00
Bats for Adapt-A-Bat™			
BTP8	8" Drilled Plasti-Bat®	1 lb.	\$9.49
BTP10	10" Drilled Plasti-Bat®	1 lb.	\$10.95

CI Products Foam Trimming Bat

Set your pot upside down on this firm foam bat and you're ready to trim. Pliable foam grips your pot for trimming, shaping or texturing. Helps with trimming uneven or even lips on pots.



CIFB14	14" Foam Trim Bat	\$19.95
---------------	-------------------	----------------

Brent® Batmobile

A great way to store your unused bats. The Batmobile can hold 60-90 bats, depending on thickness, and has an adjustable shelf to accommodate 12" to 14" bats. 42" x 35" x 14". Now with BatBrace.



FOB Indianapolis, IN 46254

RBMO	160 lbs.	\$410.00
-------------	----------	-----------------

Brent® BatBrace

Keep bats from sliding on the Brent Batmobile that automatically stabilizes bats when inserted into the Brent Batmobile frame. The BatBrace will hold up to 50 12" or 14" Plasti-Bats.

New!



RBBRACE	1 lb.	\$12.00
----------------	-------	----------------

CI Potter's Stools

CIST1	Pro. Potter's Stool	\$225.00
CIST4	Inst./Student Stool	\$98.00
CIST5	Inst. Potter's Stool	\$79.00



CIST1 **CIST4** **CIST5**

Grinding Disc

This is a 12" diameter silicon carbide grinding disc with a peel-off adhesive backing. The disc attaches to a 12" bat for easy grinding on your wheel. Spin your wheel at top speed and firmly set your pot on the disc and begin grinding. For best results start with G50 (coarse) and then use G80 (fine).



CIDISC50	50 Grit Grinding Disc	\$8.95
CIDISC80	80 Grit Grinding Disc	\$8.95

Brent® QuickCenter System

Centering clay on a potter's wheel has never been easier. Students can feel 'center' and develop confidence while successfully throwing on the wheel.

Begin centering up to 4 pounds of clay in three easy steps: Load the Canister/Plunger with clay by pressing into wedged clay. Secondly place the Universal Adaptor and Recessed Bat onto the wheel head using the QuickCenter bat pins. And lastly center the Canister/Plunger into the Recessed Bat Set, release the clay and begin throwing.



QCENTER	\$199.00
----------------	-----------------

